

# AGENDA

## VILLAGE OF OREGON REGULAR PARK BOARD MEETING

Wednesday, December 2, 2009  
7:00 P.M.

Lower Level  
Village Hall  
117 Spring Street  
Oregon, WI 53575

1. Call to order
2. Roll Call
3. Approval of Minutes – 11/4//09
4. Public Appearances
  - a) Discussion of Identifying an Additional Softball Diamond Instead of Using Rome Corners Intermediate School's Diamond (School District Request) – Andy Weiland
  - b) Discussion of Anderson County Park with Laura Guyer from Dane County
  - c) Discussion and Possible Recommendation to Village Board re: Discussion and Possible Recommendation to the Village Board re: Development of Bergamont Park and results of survey – basketball courts, soccer, shelter, baseball fields (including sign) – Dan Dean and Pat McGuine
  - d) Lerner Conservation Park – Oregon Rotary – Possible Recommendation to Village Board re: Eagle Scout Projects
5. Communications and Miscellaneous Business
  - a) Discussion of Email from DNR re: Plains Gartersnake Study Summary (FYI Only)
  - b) Discussion and Possible Action re: Mounting Plan for Benches in Westside Community Park
  - c) Continuing Discussion and Possible Recommendation to the Village Board regarding Possible Revised Grass Mowing Schedule in 2010
  - d) Begin Discussion on Status of Dega Park
  - e) Discussion of Possible School Project in Parks
6. Unfinished Business
7. New Business
8. Report of Public Works/Parks Department
9. Items for Future Meetings and Future Assignments

- a) Ten-Year Capital Improvement Plan for Parks
- b) Ribbon Cutting for Jefferson Street/North Alpine Parkway Bike/Pedestrian Path and Dedication of Keller Alpine Meadows Park
- c) Discussion of Possibly Establishing Fenced Dog Area
- d) Jim Lease Merri-Hill 4<sup>th</sup> Edition

## 10. Adjournment

**Committee Members: Jon Blanchard; Jennifer Skibba; Dan Olson; School Representative: Ron Novinska; Chamber Representative: Chad Winklepleck; Student Representative: Vacant; Village Board Representative: Jon Lourigan, Rotary Representative: Rich Strohmenger**

Notice is hereby given that a majority of the Village Board of the Village of Oregon is expected to be present at the meeting of the Park Board scheduled for December 2, 2009 to gather information about subjects over which they have decision making responsibility. This constitutes a meeting of the Village Board of the Village of Oregon pursuant to State ex rel. Badke v. Greendale Village Board, 173 Wis. 2d 553, 494 N.W. 2d 480 (1993) and must be noticed as such although the Village Board will not take any formal action at this meeting.

Any person who has a qualifying disability as defined by the Americans with Disabilities Act that requires the meeting or materials at the meeting to be in an accessible location or format must contact the Village Clerk at (608) 835-3118, 117 Spring Street, Oregon, Wisconsin, at least twenty-four hours prior to the commencement of the meeting so that any necessary arrangements can be made to accommodate each request.

**Park Board Meeting**  
November 4, 2009 P.M.

**1. Call to order**

The meeting was called to order at 7:03 p.m. by Chair Person Jon Blanchard.

**2. Roll Call**

Present: Jon Blanchard, Jennifer Skibba, Jon Lourigan, and Rich Strohmenger  
Absent: Ron Novinska, Dan Olson, and Chad Winklepleck  
Also Present: Assistant Public Works Director, Gary Disch

**3. Approval of Minutes – 10/7/09**

**Strohmenger moved to approve the October 7, 2009 minutes. Second by Lourigan. Motion Carried.**

**4. Public Appearances**

a. Discussion and Possible Recommendation to Village Board re: Jim Lease Merri-Hill 4<sup>th</sup> Edition

- Jim Lease and Eric Sands were present.
- Jim and Eric presented the concept plan of Merri-Hill 4<sup>th</sup> Edition.
- There are two possible locations for park land. 1- Adding onto Rustic Vineyards or 2- in the South West corner.
- A Road connecting with Perry Parkway will also be in the plans for access to the park.
- There is a walkway to Richards Road that leads to Merri-Hill Park.
- The drainage will have a concrete path.
- A bridge will go over the waterway connecting the two parks, Merri-Hill 4<sup>th</sup> Edition to Rustic Vineyards.
- The half of the SW Corner will be used for storm water management.
- IF SW Corner is not park land the design or layout may slightly change.
- The South half will be the first part developed.
- People purchasing property should be told that the ball diamonds in Rustic Vineyard Park are used.
- **Strohmenger moves to approve the concept plan for the Merri-Hill 4<sup>th</sup> Edition park land to be adjacent to the existing Rustic Vineyards Park. The South West corner will not be used as park land. A preliminary plan will be presented to the Park Board in the future. Second by Lourigan. Motion Carried.**

b. Discussion and Possible Action regarding development of Bergamont Park and results of survey – basketball courts, soccer, shelter, baseball fields (including sign) – Tabled

c. Lerner Conservation Park – Oregon Rotary – Possible Recommendation to Village Board re: Eagle Scout Projects – None

## 5. Communication and Miscellaneous Business

- a. Discussion of Identifying an Additional Softball Diamond Instead of Using Rome Corners Intermediate School's Diamond (School District Request)
  - When Keller Alpine Meadows is developed there will be additional baseball fields added.
  - In December 2009 the Park Board is having a discussion with a Dane County Official regarding Anderson Property.
  - Dana Leikness was present from Girls Fast Pitch and said that 4 or 5 weeks are very busy during the summer and she had talked to the school. Girls Fast Pitch was making some changes to accommodate the concerns.
- b. Discussion of Email from Randy Joswig re: Oregon Adult Softball Association's Contribution towards the scoreboard in Kiser Park - **FYI**
- c. Discussion and Possible Recommendation to Village Board re: Purchasing of Benches for Westside Community Park
  - The Park Board agreed that benches with arms were important in these areas.
  - When the Park Board Members walked the park this fall it was decided that 4 benches were needed.
  - A question came up of how to anchor the benched. After some discussion it was decided to anchor the benched to a slab of concrete. The floating slab made by the Parks Department. The cost would be about \$500-\$600 dollars.
  - The benches are on page 47. The book will be at the Village Board Meeting to review. Jon Lourigan has a copy of the catalog.
  - We will receive 10% off the price if ordered before December 1<sup>st</sup> with shipment before January.
  - Shipping will be added when the motion is made.
  - **Lourigan moves to purchase four benches to be placed in the Westside Community Park for the sum of \$3,400.00 to avoid the cost increase for 2010. The benches need to be ordered before December 1, 2009. Second by Strohmenger. Motion Carried.**
- d. Correspondence from Madison Community Foundation regarding 2008 Annual Report. **FYI**
- e. Continuing Discussion regarding Possible Revised Grass Mowing Schedule in 2010
  - Tall grass causes problems for the future. Wet areas become soggy and hard to mow even when it is not so wet.
  - The Park Board looked at the map and noted some area that get used and would need to get mowed.
    - Gasner and Bethal (where ball diamonds are located)
    - Jon is looking into if Forest View is being used for soccer
- f. Possible Discussion of Anderson County Park with Dane County Official at December Park Board Meeting – **FYI**

**6. Unfinished Business**

**7. New Business**

**8. Report of Public Works/Parks Department**

- Trimming Trees
- Collecting Picnic Tables
- Taking nets down in Kiser Park
- Digging up sand areas if there is time
- Putting the scoreboards up in Kiser Park

**9. Items for Future Meetings and Future Assignments**

- a. Ten-Year Capital Improvement Plan for Parks
- b. Ribbon Cutting for Jefferson Street/North Alpine Parkway Bike/Pedestrian Path and Dedication of Keller Alpine Meadows Park in 2009
- c. Discussion of Possibly Establishing Fenced Dog Area

**10. Adjournment**

**Skibba moved to adjourn the Park Board Meeting at 8:25 p.m. Second by Lourigan. Motion Carried.**

Minutes Submitted by: Jennifer Skibba



5(a)

**Mark Below**

**From:** Mark Below  
**Sent:** Tuesday, November 17, 2009 1:36 PM  
**To:** 'Nelson, Heidi M - DNR'  
**Cc:** Gary Disch  
**Subject:** RE: Plains gartersnake study summary

Heidi,

If you want to leave the boards out there over the winter that is fine with me.  
 I will have Gary update the Park board with this information as well as your survey results as well when you send them.

If you need anything else feel free to contact me.

Thanks

---

**From:** Nelson, Heidi M - DNR [mailto:Heidi.Nelson@wisconsin.gov]  
**Sent:** Tuesday, November 17, 2009 12:28 PM  
**To:** Mark Below  
**Subject:** Re: Plains gartersnake study summary

Hello Mark,

I am attaching a preliminary summary report for this year's gartersnake survey effort. One caveat - these numbers were compiled manually as we are still working on the data entry/qc, so these could change.

I also wanted to touch base with you regarding the boards that are still out. We do wish to continue surveys next spring at first emergence, especially at Oregon. Would it be all right if we were to leave the boards down over the winter so they would be good to go as soon as the snakes emerge? (If this is a problem, we can come pick them up). As you probably noticed, the drift fencing was removed last week.

Thank you,

**Heidi M Nelson**

Landowner Incentive Program Coordinator  
 Bureau of Endangered Resources/6th Floor  
 Wisconsin Department of Natural Resources  
 101 S. Webster St., Box 7921  
 Madison, WI 53707-7921

phone: (608) 267-0797

fax: (608) 266-2925

e-mail: Heidi.Nelson@Wisconsin.gov

<http://dnr.wi.gov/org/land/er/wlip/index.htm>

**Total Control Panel**[Login](#)

To: [mbelow@vil.oregon.wi.us](mailto:mbelow@vil.oregon.wi.us)

Message Score: 1

High (60): Pass

From:

My Spam Blocking Level: Medium

Medium (75): Pass

[prvs=565710639=heidi.nelson@wisconsin.gov](mailto:prvs=565710639=heidi.nelson@wisconsin.gov)

Low (90): Pass

[Block](#) this sender

[Block](#) wisconsin.gov

*This message was delivered because the content filter score did not exceed your filter level.*

11/17/2009

**OREGON CITY PARK  
DANE COUNTY, WISCONSIN**

**Site Results** (Please note – the numbers in this table are preliminary and may change following completion of data entry and quality control).

A total of 14 Plains Gartersnakes were measured, and a tail snip collected, from this site: 8 adults and 6 neonates. In general, the drift fencing proved to be a far more effective method of collection at this site, with the vast majority of these individuals being caught at the end of the study period.

Site Visit Date	Number of Plains	Recaptures	Other Snake Species	Notes
07/09/2009	0	0		
07/15/2009	0	0		
07/17/2009	0	0		
07/22/2009	0	0		
08/12/2009	0	0		
08/26/2009	0	0	2 common gartersnakes	
08/30/2009	0	0	1 common gartersnake	
09/02/2009	0	0	1 common gartersnake	
09/09/2009	0	0		
09/13/2009	0	0		
09/16/2009	0	0		
09/22/2009	1 neonate	0		Neonate means young of the year
09/23/2009	0	0		
09/24/2009	0	0		
09/25/2009	0	0		
09/28/2009	1 adult	0		
09/29/2009	1 adult	0		
10/01/2009	1 dead juvenile	0		
10/19/2009	2 adults	1	1 common gartersnake	
10/21/2009	3 neonates	0		
10/25/2009	1 neonate, 1 adult	0		

Wisconsin Department of Natural Resources  
Bureau of Endangered Resources

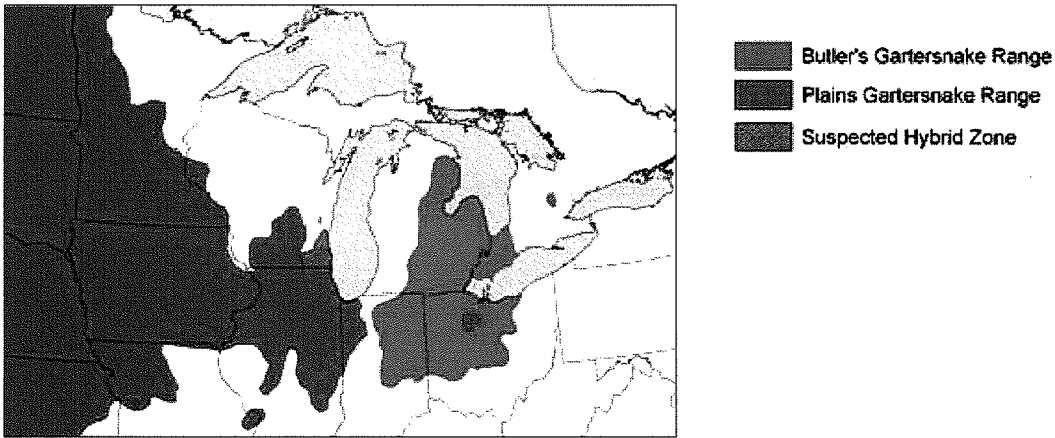
Plains Gartersnake Site Survey Report 2009

Thank you for your help!

Gratitude and thanks are expressed to all landowners and land managers who welcomed surveying to be done on their property. Without your cooperation and help this study would not have been completed as smoothly as it was.

**Background**

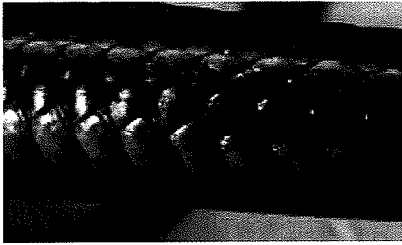
Plains gartersnakes are one five gartersnake species in Wisconsin, and look very similar to the Butler's gartersnake. The two species interbreed and produce a hybrid gartersnake that is difficult to distinguish from the parent species. Butler's gartersnakes are currently listed as threatened, Plains gartersnakes are listed as a species of special concern and hybrids are not protected in Wisconsin.



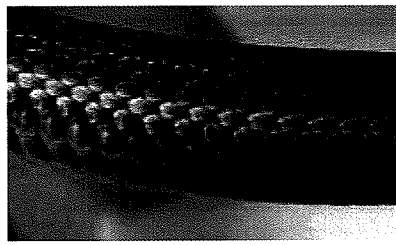
Plains gartersnakes prefer open upland habitat that is close to water, such as wet-mesic prairies, grasslands, and savannas. The Wisconsin Plains gartersnake range includes most of southern Wisconsin and a small part of northwestern Wisconsin.



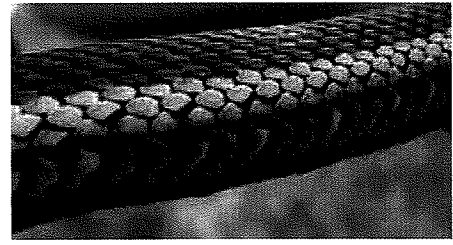
Plains gartersnakes can be distinguished by the location of the snake's lateral stripe (see photos below and attached identification information). On plains, the lateral stripe is found on scale rows three and part of scale row four. The lateral stripe on Butler's is found on the upper part of scale row two, all of scale row three and part of scale row four. The common gartersnake is also similar, but has a lateral stripe on scale rows one, two and three.



**Plains Gartersnake**



**Butler's Gartersnake**

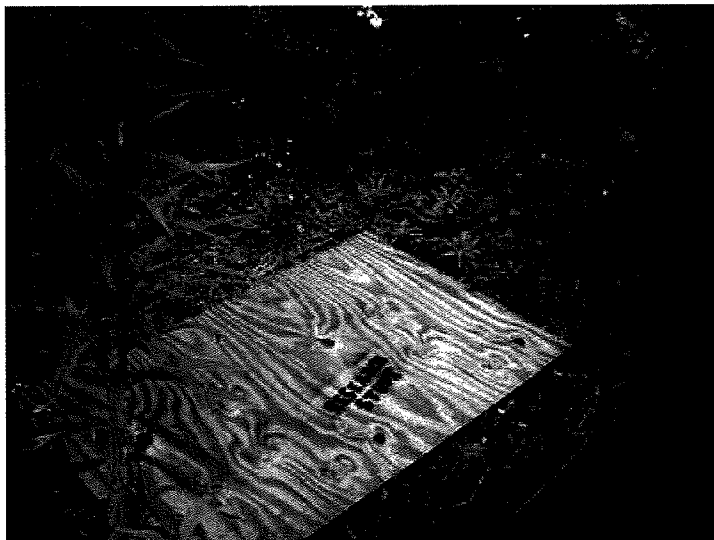


**Common Gartersnake**

In 2008, a morphological and genetic study was done to further define the physical traits and determine the ranges of Butler's and plains gartersnakes in Wisconsin. These initial reports have put into question the exact location of the Butler's gartersnake's southern range boundary in southeastern Wisconsin and the effectiveness of the current method used to physically differentiate Butler's, plains and hybrid gartersnakes. This current genetic and physical identification research is needed to determine exactly where Butler's gartersnakes occur in Wisconsin and if Butler's gartersnakes can be reliably distinguished physically from plains in the field. The Department of Endangered Resources has contracted with University of Wisconsin Stevens Point to begin answering these questions. The study conducted this summer and fall and in the coming year will help better understand the genetic relationship between Butler's and Plains gartersnakes, help refine state ranges for both species and help establish physical characteristics consistent with genetic identification.

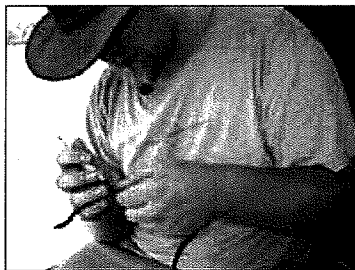
### **Methods**

Sites with potentially suitable habitats for Plains gartersnakes were chosen from sites near previous sightings of Plains and from aerial photographs. Land managers and private land owners were contacted and arrangements were made to place cover boards on the sites. Five to ten 48"x32" 3/4 inch boards were placed at each site in direct sunlight to attract the snakes. Snakes will use cover boards, which are warmed by the sun, to warm up in the early morning and late afternoon when the air is cool.



Surveys were conducted once or twice a week on some properties beginning in June, and several more survey locations were added later in the season. Surveys were usually done in the late afternoon or evening when the likelihood of snakes using the boards would be greatest. Time, temperature, humidity, wind speed and amount of sunlight were recorded during each survey.

When a Plains gartersnake was found, a series of measurements and photos were taken and recorded. Length and width of the each snake's body, head and neck were measured with calipers and tape measures. Supralabial and infralabial (upper and lower lip) scales were counted, as were ventral scales and number of scale rows. Lateral stripe position was determined by examining the mid-section of the body. A tail clipping was collected from each snake processed and sent to UW Stevens Point for genetic analysis.



### **Context & Next Steps**

We are currently completing field sampling and sending tail clips to UW Stevens Point for start of the genetics study. The primary investigator in Stevens Point will analyze the samples and create genetic markers to help distinguish Butler's and plains gartersnakes. Results from this summer's study will be posted on the Butler's gartersnake conservation website (<http://dnr.wi.gov/org/land/er/review/Butler/>) in the coming months. As of the end of this survey season, only two populations of plains gartersnakes have been confirmed in Wisconsin, one in Dane County and one in Dodge County. Because of the low abundance of plains gartersnakes in the state, we are considering continuing our plains survey in the spring and summer of 2010. We started this survey in June, but would like to survey earlier in spring when the snakes are moving out of their hibernacula. We will be contacting landowners in the coming months to discuss next season's field surveys.

### **Contact**

Heidi Nelson

Bureau of Endangered Resources: Wisconsin Department of Natural Resources

[Heidi.Nelson@wisconsin.gov](mailto:Heidi.Nelson@wisconsin.gov)

(608)-267-0797

5(b)

**Michael Gracz**

---

**From:** jblanchard@oregonband.org  
**Sent:** Wednesday, November 11, 2009 9:47 AM  
**To:** Gary Disch; Michael Gracz  
**Subject:** [Fwd: Du Mor Bench Pricing]

Hi Mike and Gary,

I received this email below from Bob S. I know that we want green for the color, but I think we were not decided on the mounting plan. I guess we will have to make that final decision at our December meeting and place the order shortly after that.

Gary...could you document the installation and material costs for both the "bury" and "surface mount" options.

Thanks,  
Jon

----- Original Message -----  
Subject: Du Mor Bench Pricing  
From: "Bob Szalkowski" <[bob@gerberleisure.com](mailto:bob@gerberleisure.com)>  
Date: Mon, November 9, 2009 3:17 pm  
To: "Blanchard, Jon M" <[jblanchard@oregonband.org](mailto:jblanchard@oregonband.org)>  
-----

Jon,

Thank you for contacting me regarding the Du Mor benches for Oregon Parks. I spoke with Du Mor and they will hold 2008 pricing until January 29th. 2010.

They are expecting a 4% price increase for 2010 but they have not formally announced any new pricing yet.

When you order we will need to know the colors you have selected and the bench frame style (direct bury vs. surface mount).

If we prepare the order this year all the billing and shipping can be in 2010 if needed.

Please let me know if you have any questions.

Bob Szalkowski  
Gerber Leisure Products  
PO Box 42

Mount Horeb, WI 53572  
1-800-236-7758 Fax 1-800-909-5059  
Mobile 1-608-279-1020

---

**Total Control Panel**

[Login](#)

To: [mgracz@vil.oregon.wi.us](mailto:mgracz@vil.oregon.wi.us)      [Remove](#) this sender from my allow list  
From: [jblanchard@oregonband.org](mailto:jblanchard@oregonband.org)

*You received this message because the sender is on your allow list.*

Jon,

Thank you for contacting me regarding the Du Mor benches for Oregon Parks. I spoke with Du Mor and they will hold 2008 pricing until January 29th. 2010.

They are expecting a 4% price increase for 2010 but they have not formally announced any new pricing yet.

When you order we will need to know the colors you have selected and the bench frame style (direct bury vs. surface mount).

If we prepare the order this year all the billing and shipping can be in 2010 if needed.

Please let me know if you have any questions.

Bob Szalkowski  
Gerber Leisure Products  
PO Box 42  
Mount Horeb, WI 53572  
1-800-236-7758 Fax 1-800-909-5059  
Mobile 1-608-279-1020